



Eva Putrová

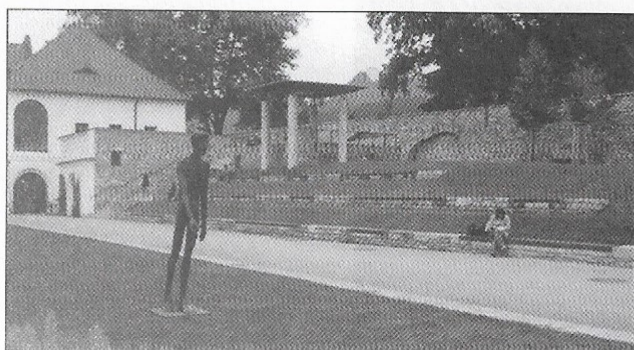
## WORKSHOP AND EXCURSION IN SOUTH MORAVIA

In the period 24-26 June 2004 the SPECTRA Centre along with the Institute of Spatial Planning and Urban Design organised dissemination workshop and excursion focused on current developments in landscape planning and architecture in south Moravia for the undergraduates and postgraduates in landscape planning at the Faculty of Architecture and for pedagogical and research staff.



The first day was devoted to the most significant landscape monument, Lednice - Valtice area. We got acquainted not only with the history of the whole area but also with current problems of restoring and maintenance of this unique landscape environment. The participants visited the castle garden in Valtice, Diana's Church and Colonade, the examples of landscape dominants in the Lednice-Valtice area as well as one of the ponds as an example of maintenance in particular landscape system. It was interesting to compare the state of historical park space now and in the past. New elements in the regular ground floor are remarkable as well as the high standard of maintenance of this historical area and its surroundings, with the cycling routes.

The second day was devoted to two Moravian cities - Litomyšl and Brno. The city of Litomyšl was interesting not only due to its restored historical architecture but also with its modern architecture and design of outdoor public spaces. Also restoration of inner residential area and the banks of the river Loučná that are the first part of revitalisation of the concrete housing estate is impressive.



Highly appreciated was the approach to restoration of the Monastir Gardens on the plateau above the city. It is historical environment but the objective of restoration was not its detailed historical reconstruction but the creation of relaxing area for the citizens and visitors. Artistic design of built-in and natural elements, including vegetation and music is a masterpiece, which was introduced by one of the authors Ing. Zdeněk Sendler and the representative of the Local Government of Litomyšl, Mr. A. Dokoupil, who explained the long-term and difficult process of its realisation. In Brno the participants visited the Vila Tugendhat, which was in 2001 listed under the UNESCO World Cultural Heritage. It belongs the the main architectural masterpieces of Mies van der Rohe and one can only admire its spatial and landscape location and linkage of indoor and outdoor spaces. The oldest city park in Bohemia- Lužánky, which is in proximity of Vila Tugendhat, is also under the process of restoring and the design includes the playground located in the historical environment. It is clear that Czech landscape planners and architects are on the good way forward.



The last day was devoted to the jewels of classical landscape and park architecture in Kroměříž and the castle of Buchlovice. The Květná zahrada in Kroměříž, well-known UNESCO monument impressed not only with its colourful vegetation and ornaments but also with its geometrical concept and the concept of synergy of various landscaping elements.

The workshop in south Moravia, together with the excursion was highly interesting and motivating not only for the undergraduates and postgraduates of the branch Landscape Planning and Architecture at the Faculty of Architecture of the Slovak University of Technology in Bratislava but also for the participants of the University of the Third Age and of course for the teachers and researchers. Moreover, the discussions have led to confrontation of two generation approach to landscape planning and architecture.